



GMT MONTHLY MEMBERSHIP PROGRESS REPORT

Results as of: 6/30/2018

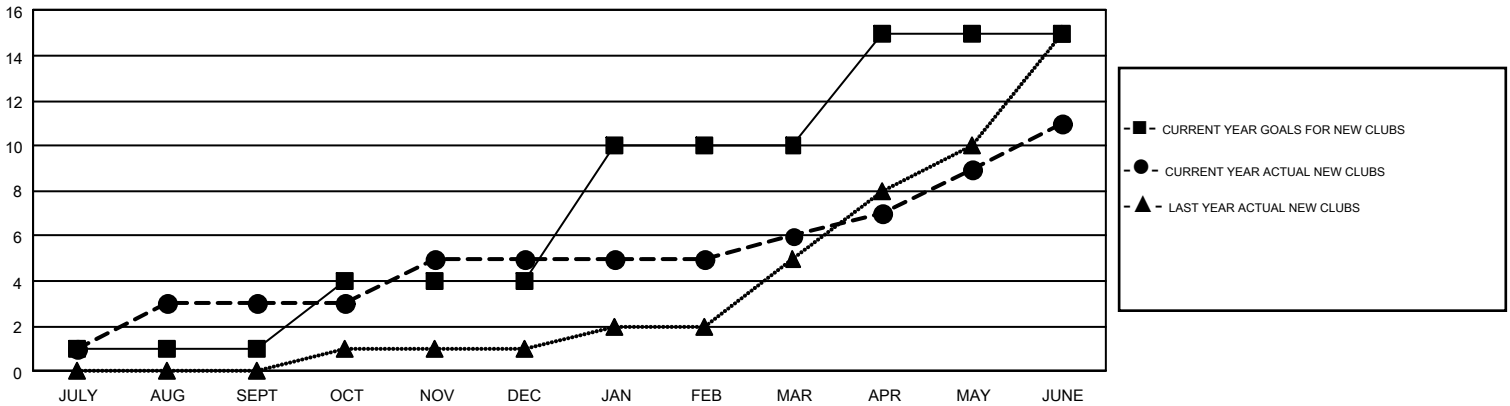
GMT Constitutional Area 4, Group C

GMT: MIKLOS HORVATH

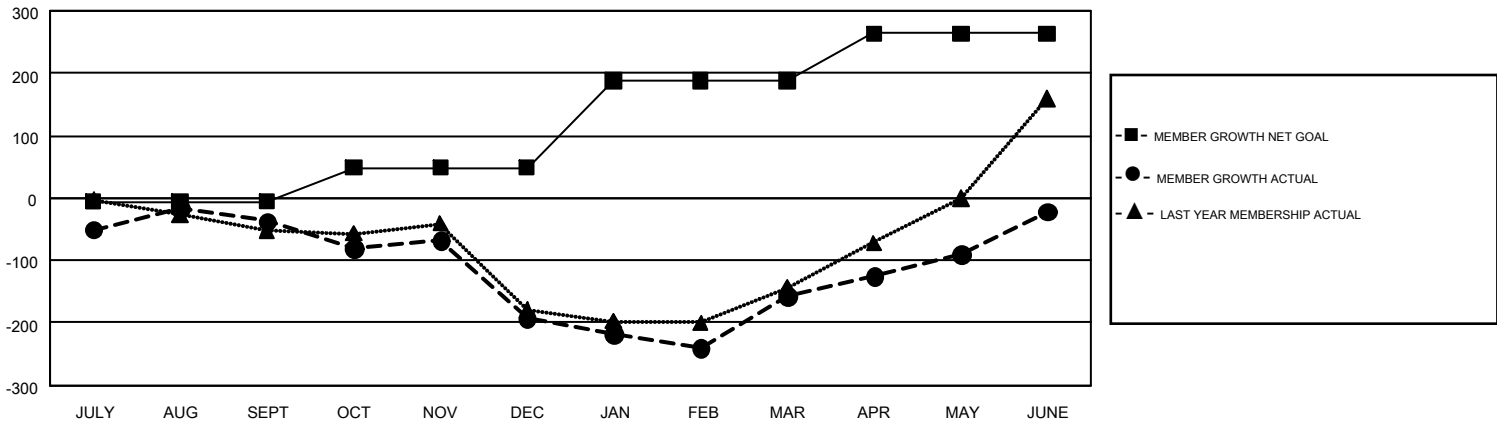
REPORT DOES NOT INCLUDE CLUBS IN UNDISTRICTED AREAS.

Clubs				Members			
RESULTS FOR 2017-2018				RESULTS FOR 2017-2018			
QUARTER	NEW CLUB GOAL	NEW CLUBS	DROPPED CLUBS	QUARTER	MEMBER GROWTH NET GOAL	MEMBER GROWTH ACTUAL	DROPPED MEMBERS ACTUAL (including transfers)
JULY/AUG/SEPT	1	3	2	JULY/AUG/SEPT	-6	155	185
OCT/NOV/DEC	3	2	4	OCT/NOV/DEC	55	131	281
JAN/FEB/MAR	6	1	2	JAN/FEB/MAR	139	218	170
APR/MAY/JUNE	5	5	1	APR/MAY/JUNE	76	527	385

GOALS AND ACTUAL NEW CLUBS CUMULATIVE



GOALS AND ACTUAL MEMBERS CUMULATIVE



DROPPED CLUBS: 9	227 CLUBS OF 428 ADDED 1 OR MORE NEW MEMBERS	GENDER DISTRIBUTION MALE 5,136 (59.25%) FEMALE 3,533 (40.75%)
DROPPED MEMBERS DECEASED 26 CLUB CANCELLED 71 OTHER 923 TOTAL 1,020	CLICK HERE FOR CUMULATIVE MEMBERSHIP DATA	TOTAL FAMILY UNIT MEMBERS 0 FAMILY MEMBERS PAYING HALF DUES 0